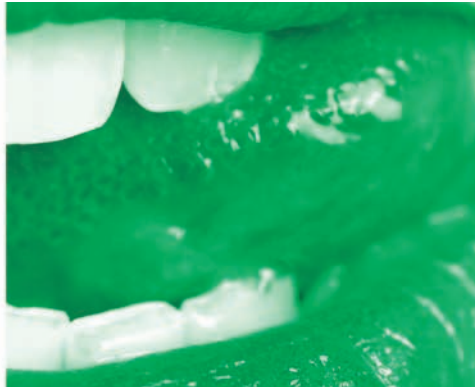




FACE, TONGUE AND NAIL ANALYSIS

As many individuals seek to take proactive responsibility for their health, there is a growing need for qualified natural health professionals with the skills and knowledge to help others build and maintain healthy lifestyles.



**REGISTER
NOW!**

REGISTRATION: \$225

**Register one month prior to the seminar and receive the
Early Bird Registration \$25 Discount (\$200 registration fee)**

Registration Fee: \$225.00 • Walk-In Registration Fee: \$250.00 • Cancellation Fee: \$25.00

LOCATION / DATE / TIME / CONTACT

FACE, TONGUE AND NAIL ANALYSIS

Primarily drawing from Traditional Chinese Medicine with some Ayurvedic influence, this class will analyze the tongue, nails and face. Since each person represents a walking history of their development, you will understand how the features of the body reveal constitutional strengths and weaknesses. You will learn the genetic and lifestyle markings in relation to the body's systems, organs and glands. This class will enable you to determine imbalances in the body and understand the whole person.

**THE NATIONAL ASSOCIATION OF CERTIFIED
NATURAL HEALTH PROFESSIONALS**

710 East Winona Ave
Warsaw, IN 46580



1-800-321-1005/FAX 574-268-5393

For more information on CNHP, please direct your questions to: information@cnhp.org